

Title:	How to make a linkage with WIFI Camera by HC Cloud	Version:	HC V6.6.300	Date:	09/10/2024
Product:	AX Pro, HC, WIFI Camera			Page:	1 of 2

Preparation

1. AX PRO V1.2.9 build 240621
2. Hik-Connect App
3. DS-2CV2041G2-IDW-W or DS-2CD2443G2-IW-W

For AX Pro, How to make a linkage with Wi-Fi Camera by HC Cloud

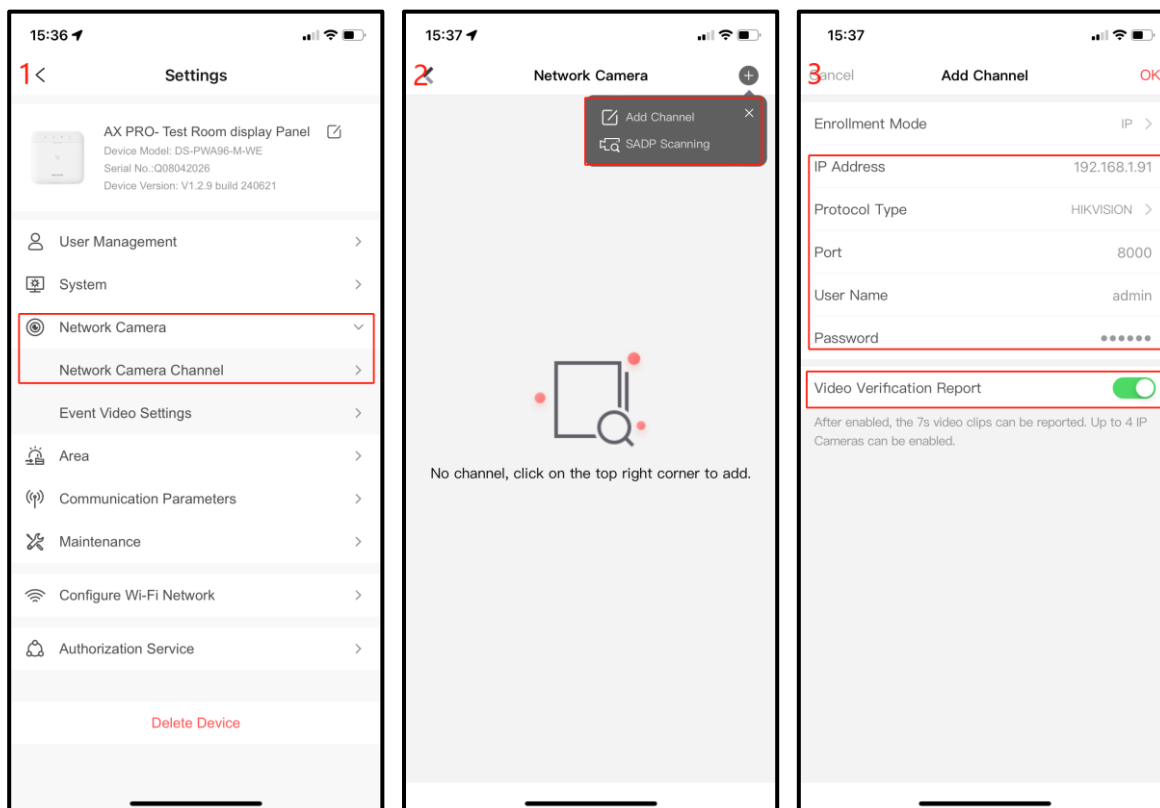
1. For AX Pro, How to make a linkage with WiFi Camera by HC Cloud

Step1: Add WiFi Camera to Hik-Connect APP

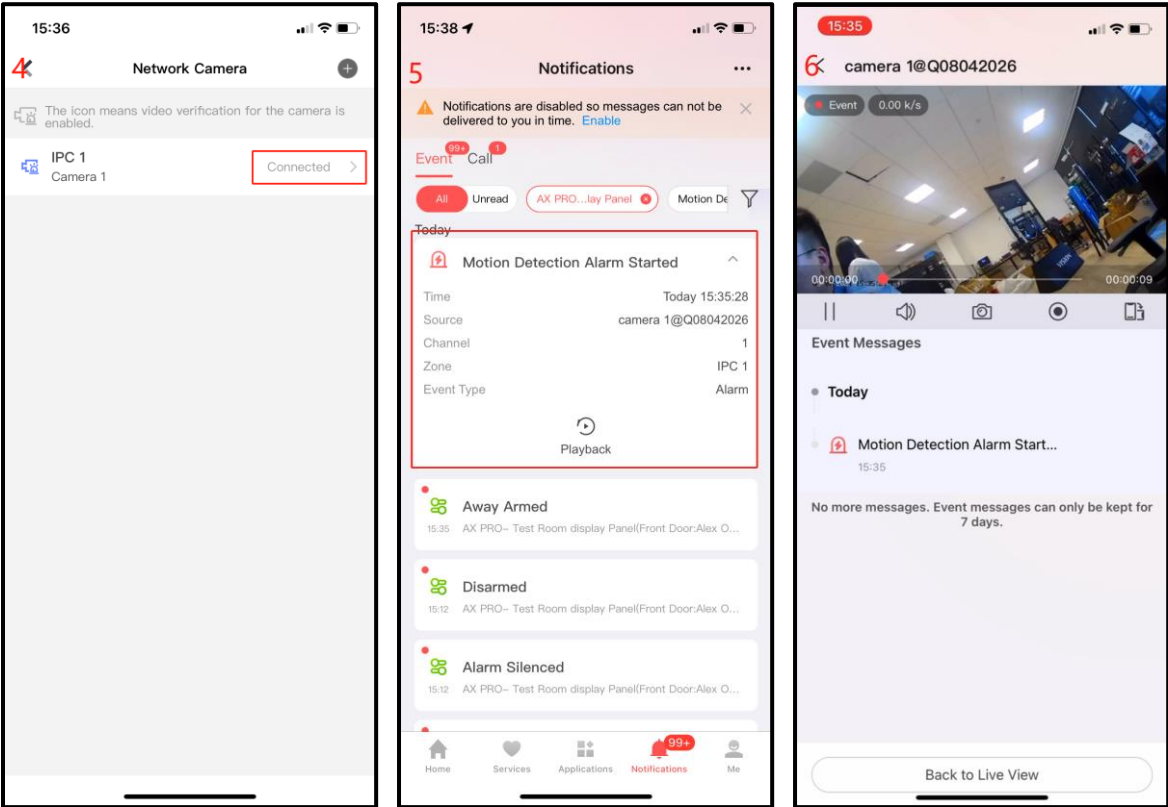
Step2: Make a linkage with a detector (for example: MC) in AX Pro

Step3: Arm AX Pro & Trigger MC

Step4: Receive an alarm Notification, check the live video, and play back



Title:	How to make a lineage with WIFI Camera by HC Cloud	Version:	HC V6.6.300	Date:	09/10/2024
Product:	AX Pro, HC, WIFI Camera			Page:	2 of 2



BTW: Due to the limitation of AX Pro Control Panel storage capacity, only the latest 7s video can be seen at present **Due to the limitation of host storage capacity; only the latest 7s video can be playback at present**

First Choice for Security Professionals
HIKVISION Technical Support